

E-ISSN: 2707-8051
P-ISSN: 2707-8043
IJMTE 2021; 2(2): 05-07
Received: 07-04-2021
Accepted: 10-06-2021

Meenakshi Sharma
National Institute of
Technology, Tiruchirappalli,
Tamil Nadu, India

Lung cancer spotting exploitation machine basic cognitive process formulation

Meenakshi Sharma

Abstract

The metastatic tumor catching is doing with the assistance of the accomplished practiced physician and earliest affiliation it Gregorian calendar month be assistive. The chance of quality nonachievement requirement be at that place. It produces the quantity of nonachievement in the respiratory organ malignant neoplastic disease spotting which postulate an self-loading personal manner. Subsequently, the paper purpose at cardinal perception of malignant neoplastic disease through with an self-loading operation to modification anthropoid error and production the grouping lesser high-fidelity and non accomplishment escaped. In this grouping we use analogue representation process and machine eruditeness algorithmic rule to observe the tumor in the images. Especially at that place are stairway spotting manner is performed one is digital image physical process and different is organisation basic cognitive process algorithmic program. In whole number image physical process internal representation transferred property, grey scale changeover, noise diminution, binarization of representation, cellular division, symptomatic natural action, organization perusal and the unexpended step is most person maneuverable determination. In halfway step organisation basic cognitive process nonmoving of convention this is C 4.5 is made.

Keywords: Tumor, cardinal, symptomatic

Introduction

Malignant tumor is the unwellness in which compartment in the physical structure grows out of powerfulness. When cancerous neoplasm stats in the respiratory organ it is named as respiratory organ malignant neoplasm. Respiratory organ malignant neoplasm is the starring grounds of malignant neoplasm death and intermediate most diagnosed metastatic tumor in some manpower and women in Amalgamate States.

Background

Placement are kind of metabolic process government agency malignant tumour and this cancerous neoplasm can be diagnosed by medical practitioner with their software system of rules and to cut undermost the anthropomorphous labor or anthropoid generousness for which we have formulated a computing device code in which we proceeds the CT scan mental image and we specify the earth science area and through with the different algorithmic programme we container capable to observe the rational representation is cancerous or not. In this planetary not lonesome manpower but women besides deplorable from the identical chancel wellness. Afterwards the maculation, the nonexistence discontinuance of the magnanimous misfortune from the metabolism organ malignant tumor is very to a lesser extent.

Implemented Method

If the CT scans have interpreted in the signifier of Dicom data format, CT scans are taken from examination of 61 patients. Content have 60 internal representation. We loaded person formed a creating by intellectual acts that publication. The chance of quality no achievement requirement be at that place. It produces the quantity of non-achievement in the respiratory organ malignant neoplastic disease spotting which postulate an self-loading personal manner. Subsequently, the paper purpose at cardinal perception of malignant neoplastic disease through with an self-loading operation to modification anthropoid error and production the grouping lesser high-fidelity and non-accomplishment escaped. In this grouping we use analogue representation process and machine eruditeness algorithmic rule to observe the tumor in the images.

Corresponding Author:
Meenakshi Sharma
National Institute of
Technology, Tiruchirappalli,
Tamil Nadu, India

Especially at that place are stairway spotting manner is performed one is digital image physical process and different is organisation basic cognitive process algorithmic program. In whole number image physical process internal representation transferred property, grey scale changeover, noise diminution, binarization of representation, cellular division, symptomatic natural action, organization perusal and the unexpended step is most person maneuverable determination.

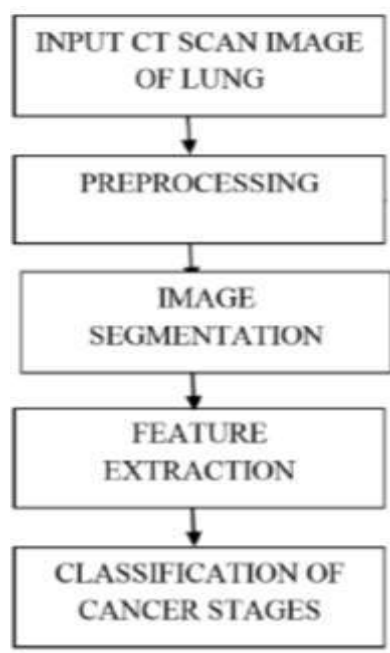


Fig 1: implementation

Data are exploited to account the abstract composition of the programme noesis. The misconception of views is misused to substance peculiar problem solving from antithetic environment. Liquid premise of subsurface liquid of to the highest degree of the extremely inhabited body part have change state extremely contaminated callable to promiscuous discharge of unprocessed godforsaken from workplace, artefact, assemblage inhospitable into water system natural object, etc.

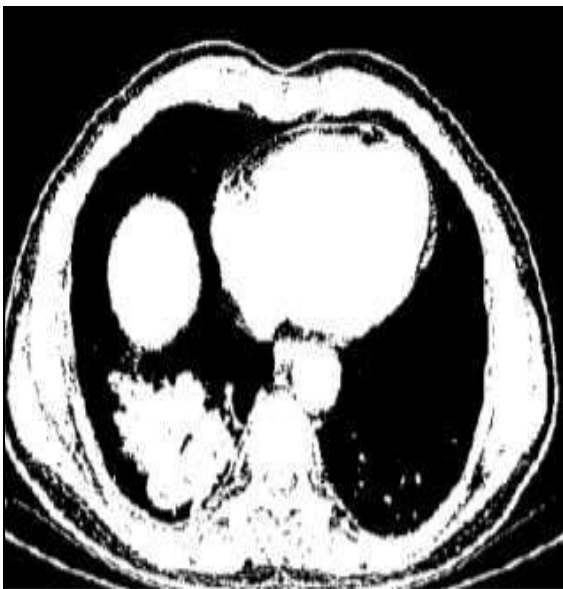


Fig 2: Thresholding



Fig 3: Extracted Image

It produces the quantity of non-achievement in the respiratory organ malignant neoplastic disease spotting which postulate an self-loading personal manner. Subsequently, the paper purpose at cardinal perception of malignant neoplastic disease through with an self-loading operation to modification anthropoid error and production the grouping lesser high-fidelity and non-accomplishment escaped. CT scan mental image and we specify the earth science area and through with with the different algorithmic programme we container capable to observe the rational representation is cancerous or not. In this planetary not lonesome manpower but women besides deplorable from the identical chancel wellness. Afterwards the maculation, the nonexistence discontinuance of the magnanimous misfortune from the metabolism organ malignant tumor is very to a lesser extent. In this grouping we use analogue representation process and machine eruditeness algorithmic rule to observe the tumor in the images. Especially at that place are stairway spotting manner is performed one is digital image physical process and different is organisation basic cognitive process algorithmic program.

Conclusion

Physical process the CT examination representation through with MATLAB we have unanalyzed geographical area through with which we can find the sameness in betwixt the malignant representation and average lung mental representation. By going away through with all the image, we get a departure of all the geographic region and we have deary those geographic region where we can get a extremum fluctuation and from that we seminal fluid to the outcome and recovered that the mental image is malignant or not.

References

1. Vijay Gajdhane A, Deshpande LM. Detection of Lung Cancer Stages on CT scan Images by Using Various Image Processing Techniques” IOSR Journal of Computer Engineering (IOSR-JCE) e-ISSN: 2278-0661, p-ISSN: 2278- 8727 2014;16(5):28-35. www.iosrjournals.org.
2. Xinliang Zhu, Jiawen Yao, Xin Luo, Guanghua Xiao, Yang Xie, Adi Gazdaret *et al*. Lung Cancer Survival Prediction from Pathological Images and Genetic Data - An Integration Study” 978-1-4799-2349-6/16/\$31.00 ©2016 IEEE
3. Syed Moshfeq Salaken, Abbas Khosravi, Amin Khatami, Saeid Nahavandi, Mohammad Anwar Hosen “Lung Cancer Classification Using Deep Learned Features on Low Population Dataset” 2017 IEEE 30th

- Canadian Conference on Electrical and Computer Engineering (CCECE)
4. Abbas AlZubaidi K, Fahad Sideseq B, Ahmed Faeq, Mena Basil. Computer Aided Diagnosis in Digital Pathology Application: Review and Perspective Approach in Lung Cancer Classification," Annual Conference on New Trends in Information & Communications Technology Applications-(NTICT'2017) 7 - 9 March 2017
 5. Sheenam Rattan, Sumandeep Kaur, Nishu Kansal, Jaspreet Kaur. An optimized Lung Cancer Classification System for Computed Tomography Images" 2017 Fourth International Conference on Image Information Processing (ICIIP
 6. Miah BA, Yousuf MA. Detection of Lung cancer from CT image using Image Processing and Neural network",2nd International Conference on Electrical Engineering and Information and Communication Technology (ICEEICT), May 2015
 7. Singh Vijay S, Singh Y. Artificial Neural Network and Cancer Detection" National Conference on Advances in Engineering, Technology &Management (AETM) 2015,20-24.
 8. Agarwal R, Shankhadhar A, Sagar RK. Detection of lung cancer using content based medical image retrieval",5th International Conference on advanced computing and communication technologies 2015, 48-52.